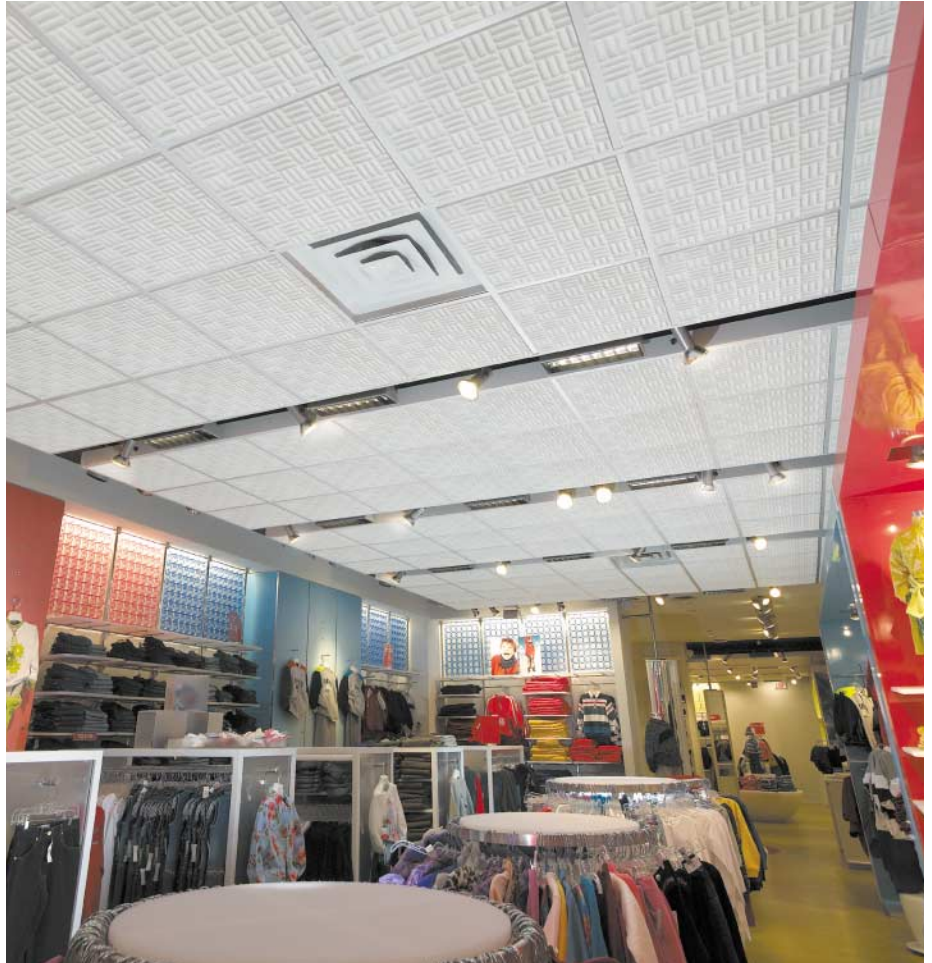


HARMONI™ Ceiling Tiles

- Smooth or softly sculpted patterns
- Contemporary flair
- Exceptional acoustical control
- Affordable price
- Extremely lightweight
- Mold-resistant, fire-retardant



HARMONI Ceiling Tiles installed in The Children's Place retail stores in North America.

HARMONI Ceiling Tiles are the natural choice when you're looking for a way to combine contemporary styling with excellent acoustical control at a moderate price. They're a perfect solution for classrooms, offices, conference rooms, listening rooms, home theaters, retail stores, corridors and any other interior area where ceiling tiles are used.

illbruck HARMONI tiles are built from our exclusive and lightweight willtec®

foam, making for easy installation and excellent sound absorption across all frequencies. The tiles are available in two styles, each with a regular edge. The VISTA pattern has a smooth surface for a clean look while the TARTAN pattern provides a softly sculpted style. HARMONI tiles are Hypalon® coated in white, black, light grey or almond for easy cleaning and durability. Since HARMONI Ceiling Tiles are naturally mold-resistant and fire-

retardant, extra protective coatings are not needed.

If you're looking for aesthetic flair, sound absorption, and functionality at an affordable price, HARMONI tiles are designed to deliver. Their combined attributes make them a unique and welcome architectural option.

Material

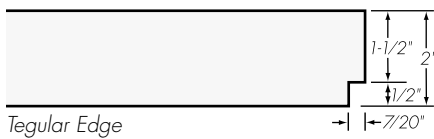
HARMONI™ Ceiling Tiles are made from illbruck's exclusive fiber-free willtec® foam. willtec is a lightweight, open-cell melamine foam that provides excellent acoustical control. HARMONI tiles also have a Hypalon® coated surface that adds durability, prevents dirt/dust penetration, and easily wipes clean with a damp cloth. These tiles are available in white, black, light grey or almond and are Class 1 fire-rated and naturally mold-resistant.

Size

- Fits all 15/16" grid systems
- Panels: 24"x24" (nominal) dimension
- Thickness: 2" (nominal)

Installation

- Quickly drops into ceiling grids
- Cross-tees facilitate retrofitting of 24"x48" ceiling tiles
- Use clean gloves to prevent soiling of tiles
- Maintain uniform temperature of minimum 60°F and maximum humidity of 40% prior to, during and after installation
- Press panels from above to set into grids (do not pull from face)



Other Products

illbruck Architectural Products manufactures a range of attractive, acoustic ceiling tiles, wall panels and baffles for commercial and industrial applications, including:

- CONTOUR® Wall and Ceiling Tiles
- SQUARELINE® Metal Ceiling Tiles
- WHITELINE® Ceiling Tiles
- FABRITEC™ Wall Panels
- SONEX® Baffles and Panels
- PROSPEC® Barrier



Specify VISTA pattern for a smooth surface or TARTAN pattern for a softly sculpted look.

Physical Data—willtec Foam

Material	Open-cell melamine-based foam
Density	0.5 to 0.7 lbs./cubic ft. (ASTM D3574-77)
Long Term Service Temperature	302 degrees F
Fire Resistance	Class 1 per ASTM E 84
Flame Spread per ASTM E 84	Hypalon coated: 25
Smoke Density per ASTM E 84	Hypalon coated: 65
Microbial Growth	Passes UL 181, section 11
Fungus Resistance	Rating #0 per ASTM G21
Finish	Hypalon coated

Sound Absorption

Test ASTM C423-90a; Mounting Type E

Frequency (Hz)	2" Thickness
125	0.89
250	0.84
500	0.78
1000	1.02
2000	1.05
4000	1.00
NRC	0.90