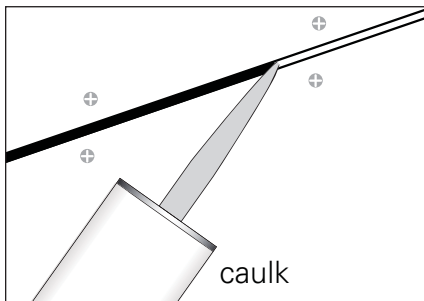


# PROSPEC Decibel Drop™ Viscoelastic Damping Compound Installation Guide



## Preparation for Installation

- Install a layer of drywall or begin on an existing layer of drywall.
- PROSPEC Decibel Drop will be applied to a second layer of drywall and secured onto the first layer, through the second layer, with drywall screws (per code).



## Seal the First Layer of Drywall

- After installing the first layer of drywall, seal the edges of the drywall with caulk or drywall compound.
- If using caulk, apply a small bead. A large bead could prevent the second layer of drywall from making proper contact with the first layer.
- If installation time is a concern, the perimeter can be sealed after the last sheet of drywall has been installed.

## Precautions During Installation

- **Cleanup:** Use drop cloths. PROSPEC Decibel Drop may be difficult to remove after it has dried. Remove excess before it dries with soap and water or a citrus cleaner.
- **Ventilation:** PROSPEC Decibel Drop emits a slight odor while being applied. Ventilate the room. Keep empty tubes in a plastic bag and remove frequently.

## Determine Coverage

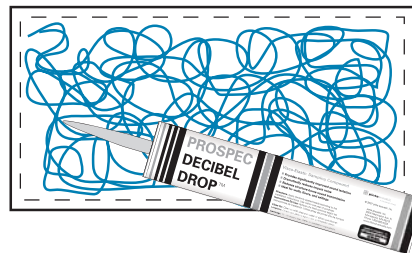
- Ideal coverage of PROSPEC Decibel Drop is between two and three tubes per 4' x 8' sheet of drywall, or one tube for approximately 10 to 16 square feet.
- Before applying, verify the appropriate coverage amount required for your specific project.

## Open PROSPEC Decibel Drop

- Opening size should be 1/8" to 3/8".
- Use a standard quart-size caulk gun.

## Apply PROSPEC Decibel Drop

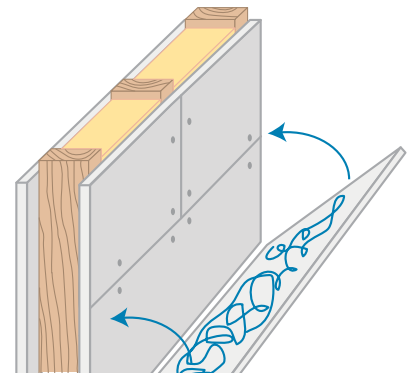
- Place a 4' x 8' sheet of drywall, back side up, on a level surface.
- Apply PROSPEC Decibel Drop 2" to 3"



- from the edge in a random pattern with uniform amounts across the surface of the drywall. There is no need to measure or trowel. Each tube can easily be dispensed in 15 seconds.
- Do not allow PROSPEC Decibel Drop to dry; it must be fully installed within 15 minutes.

## Fasten Loaded Drywall to Studs

- After applying PROSPEC Decibel Drop to the drywall, raise the sheet into place on the wall or ceiling. The loaded side of the drywall goes against the first or original layer.



- Press into place against the first or original layer of drywall. Use conventional drywall screws in a standard pattern – determined by your local building code – to attach both layers of drywall to the studs. This will squeeze PROSPEC Decibel Drop into a thin layer. Screw the drywall to the studs while PROSPEC Decibel Drop is still moist.
- Drywall loaded with PROSPEC Decibel Drop is fastened to the studs in the same manner as standard drywall.