

Memtech Acoustical, LLC

Your Source for Noise Control Solutions

Memtech Acoustical, LLC
2175 Avon Industrial Dr.
Rochester Hills, MI 48309
Phone: 248-289-1123
Toll Free: 877-606-3940
Fax: 248-289-6317

Sales@memtechacoustical.com

Product Information



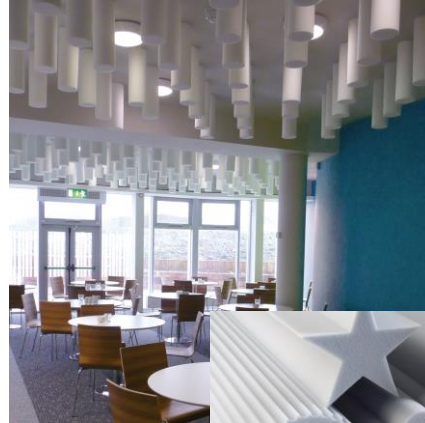
www.memtechacoustical.com

Sonex Rondo Baffles

- Vertical or horizontal configurations for design flexibility
- Exceptional sound absorption across all frequencies
- Easy installation
- Class 1 fire-rated

Applications:

- ✓ Reception areas
- ✓ Conference rooms
- ✓ Multipurpose rooms and gymnasiums
- ✓ Aquatic centers and indoor pools
- ✓ Music and classrooms
- ✓ Manufacturing facilities
- ✓ Stadiums
- ✓ Nearly any interior space



SONEX Rondo Baffles offer design versatility and exceptional acoustical properties. Easy to install vertically or horizontally, SONEX Rondo is ideal for a broad range of interior spaces, including conference rooms, reception areas, libraries, production facilities and stadiums.

Installation Information

- Can be hung vertically or horizontally, above or below ceiling lights
- The distance between hanging absorbers and the ceiling has little effect on acoustic performance

Wall-to-Wall Cable Mount Installation

- Recommended for large, open areas
- Baffles are arranged parallel with each other
- Spacer bars may be used for arrangement and placement of baffles along the cable span

Ceiling Mount Installation

- Avoid hanging baffles more than 10' below ceiling (long tethering may cause baffles to sway in areas with strong air currents)
- Use 1/16" cable or lightweight chain to hang baffles from the ceiling
- Attach cable or chain to ceiling by looping it around ceiling joists or trusses (Anchoring eyes can also be used. Install them into the ceiling before you begin.)
- Once cable or chains are in place, attach the bottom end of the cables or chains to the eye loop on top of the corkscrew hanger

Physical Data—willtec foam

Material	Open-cell melamine-based foam
Density	0.5 to 0.7 lbs./cu. ft. (ASTM D3574-77)
Long-term Service Temperature	302°F (150°C)
Fire Resistance	Class 1 per ASTM E 84 Meets UL 1715 (willtec natural)
Flame Spread per ASTM E 84 Natural	5
Smoke Density per ASTM E 84 Natural	50
Microbial Growth	Passes UL 181, section 11
Fungus Resistance Rating	0 per ASTM G21
Finishes	Natural (white or light grey)

Sound Absorption

Finish Thickness	Sabins per Baffle per ASTM C423 (J-Mount)						
	125Hz	250Hz	500Hz	1kHz	2kHz	4kHz	Ave.
Natural 6" diameter (white or light grey)	0.30	1.04	2.73	3.54	3.57	3.42	2.43

Finish Thickness	Sound Absorption per ASTM C423 (J-Mount)						
	125Hz	250Hz	500Hz	1kHz	2kHz	4kHz	NRC
Natural 6" diameter (white or light grey)	0.08	0.30	0.77	1.00	1.01	0.97	0.75