



Contact the STC Sales Department

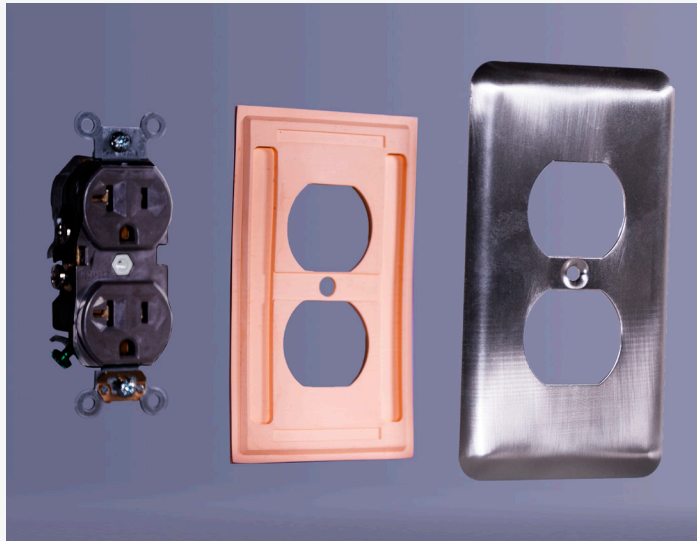
Phone: (800) 513-9425

Email: info@stcsoundseal.com

www.stcsoundseal.com

BOX SEAL™

Highest test performance of sound seals available for outlets. Only UL-listed fire-protective gasket for back-to-back outlets.



SOUND SEAL FOR RECESSED OUTLETS

Sound transmission of outlets improve from STC-19 to STC-26.

UL-LISTED FIRE PROTECTIVE

Classified as a wall-opening protective material and listed in the UL Fire Resistance Directory. Meets requirements of International Building Code 714.3.2 for protection of recessed outlets in fire-rated walls.



WALL-OPENING PROTECTIVE MATERIAL
FIRE RESISTANCE CLASSIFICATION
SEE UL FIRE RESISTANCE DIRECTORY
< R38040 >

SIMPLE INSTALLATION

Just fit the Box Seal around the device and use a screwdriver to secure in place with the wall plate.

COST-EFFECTIVE

Installed costs less than putty pads or sealants.

FITS ALL MAJOR WALL PLATES

The Box Seal comes in all common NEMA configurations and fits all major manufacturers' wall plates.

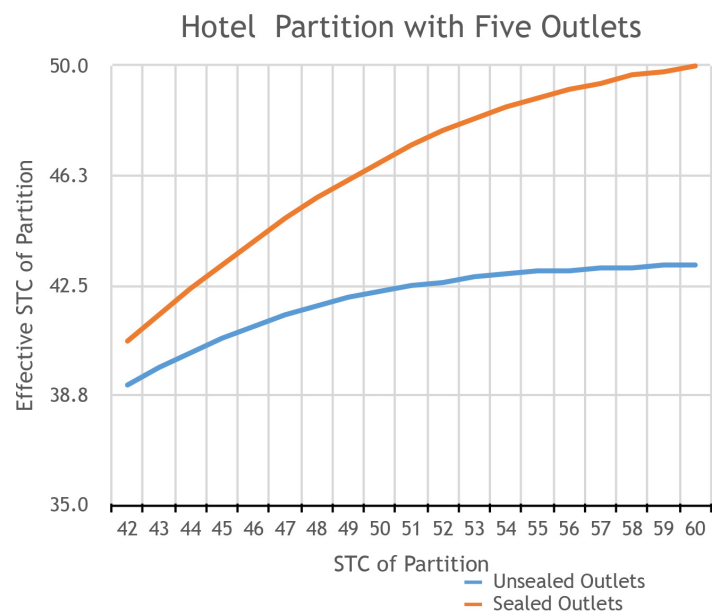
MULTIPLE LOCATIONS NEED THE BOX SEAL

The Box Seal should be used wherever acoustical privacy is valued and also wherever a one-hour fire rating is required:

Apartments, Hotels, Patient Rooms, Classrooms, Conference Rooms, Jury Rooms, Personnel Offices

HIGH PERFORMANCE

A hotel room partition can't perform better than STC-43 with unsealed outlets. With the Box Seal, the effective performance is increased by seven decibels, an extraordinary improvement.



HIGHLY ADVANTAGEOUS

The Box Seal has many additional benefits over competitors' products:

- 1 Easily installed to existing outlets.**
Putty pads require the wall to be partially demolished for installation in renovations.
- 2 Inconspicuous yet easily verified that it has been installed.**
Wall plates must be removed to verify if sealants are in place; putty pads are unverifiable once the gypsum board is installed.
- 3 Approved as a fire protective even for back-to-back outlets.**
No other gasket can claim that.
- 4 Simple installation.**
The maintenance staff can install them; no contractor is necessary.
- 5 No messy, sticky clay.**
Putty pads and acoustical sealants can be a mess to install.
- 6 Unlimited shelf life.**
Sealants dry out.
- 7 Unaffected by heat or cold.**
Sealants lose consistency if left in the truck in hot or cold weather and become unusable.
- 8 No waste.**
Half-used tubes of caulk are usually tossed. Putty pads don't always fit.
- 9 Doesn't fall from the outlet box, undetected, in the wall cavity.**
Putty pads can.

STC Box Seal™: Frequently Asked Questions (FAQ)

Q: What is the Box Seal made of?

A: The Box Seal is made of neoprene, a dense and resilient rubber selected for its ability to isolate vibrations through viscous damping. It is also specially compounded to be Class A fire-rated per ASTM E119.

Q: Will there always be a seven-decibel improvement in sound transmission loss?

A: In high-STC partitions, the Box Seal will achieve seven-db improvement of sound transmission loss and will return the partition very close to its full rated performance. In low-STC partitions, sound will transmit effectively through the partition as much as through the outlets so the effect of returning the partition to its rated performance is less dramatic.

Q: Can the Box Seal be used in a fire-rated partition?

A: Yes. The Box Seal is actually required by the International Building Code (714.3.2) for protecting recessed outlets on opposite sides of a fire-rated partition including back-to-back installations.

Q: Does the Box Seal replace putty pads?

A: Yes, for fire-rated partitions up to one-hour. The Box Seal has been tested per UL 1479 and is listed in the Underwriters Laboratories Fire Resistance Directory as a wall-opening protective device. Use with a metal wall plate when outlets on opposite sides of a fire-rated partition are less than 24 inches apart.

Q: Does the Box Seal meet National Electric Code (NFPA 70) requirements?

A: Yes. The Box Seal spans the wall opening just like the wall plate so that it occupies no space inside the electrical box. Specifically, the requirements of Section 314.16 are unaffected by use of the Box Seal.

Q: What configurations are available?

A: NEMA configurations used in the United States, Canada, Mexico, Central America, Columbia, Ecuador, Venezuela and most Caribbean and Pacific Islands. 1-gang and 2-gang arrangements are standard for duplex receptacles, toggle switches, Decora-size openings and data/TV/phone outlets, as indicated on the order form. Custom configurations are available by special order and pricing.

Q: What color is the Box Seal?

A: The standard color is light almond. The edge of the seal is an inconspicuous 1/16-inch thick, and the color blends well with light-colored wall plates. The edge can also be painted once installed.

Q: What sizes are available?

A: Box Seals are made to fit flush to the edge of standard-size wall plates. Midsize and oversize plates also fit over the Box Seal. Annular space should not exceed 1/8-inch per IBC 714.3.2.